



# SPREADSHEET SERVER

FOR USE WITH ORACLE®

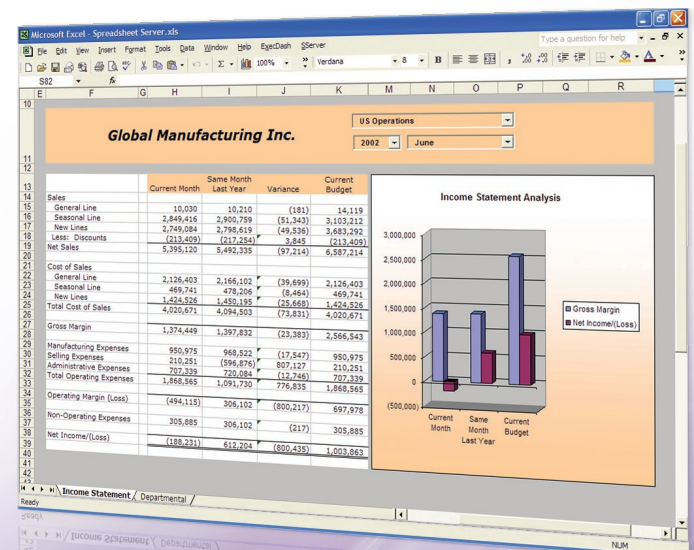
Are you currently preparing your financial analysis and reports for Oracle® eBusiness Suite in Microsoft® Excel? Would you like to automate your Excel processes using data from your Oracle GL?

Spreadsheet Server is a powerful Excel add-in which brings dynamic data from your General Ledger directly into Excel spreadsheets. You have complete control over the design and content of your Oracle reports using only Excel features and functions. Summary balances and detail drill down can be retrieved and manipulated within the desktop tool everyone is familiar with, Excel.

The highly volatile nature of financial reporting creates a need for dynamic information. Leveraging spreadsheet functionality with Global's technology, the integrity of critical Oracle financial data is maintained. Spreadsheet Server for use with Oracle is also intuitive to install and maintain. No server-side deployment means no day-to-day IT support is required.

## Benefits include:

- Eliminate requirement for IT or super-users to create/change financial reports
- Combine reporting, account inquiry, and journal inquiry into one application
- Publish executive-quality reports from Excel
- Perform corporate consolidations with instant access to dynamic data
- Leverage spreadsheet skills and write reports within minutes
- Drill down from within Excel, to 'live' Oracle GL balances and more
- Increase efficiency and timeliness of your budgeting process
- No more downloading or re-keying/exporting of Oracle balance or transaction level data
- No staging areas or data warehousing needed
- Dramatically reduce number of days to close your books
- Direct ODBC and TCP/IP connection available



# SPREADSHEET SERVER FEATURES & BENEFITS

## Dynamic Balances

Retrieve dynamic period, year-to-date, life-to-date and quarter balances using simple Excel formulas. Formula wizard is available to assist users in creating new formula expressions. Segment descriptions can also be retrieved for single accounts.

## Account Combinations

Use wild cards, ranges, or segment lists to retrieve any combination of accounts into a single spreadsheet row. Segment Lists are user defined combinations of segments that are set at the local level or can be shared among multiple users.

## Drill Down Capabilities

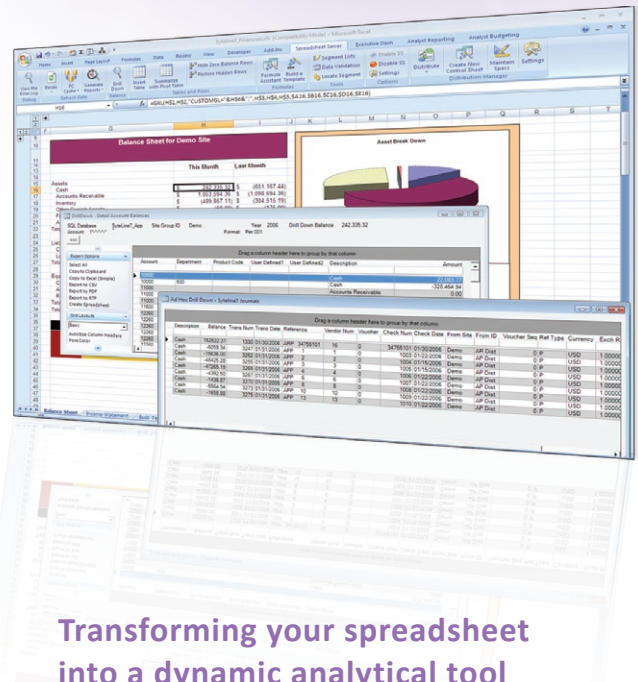
Dynamic drill down capabilities allow for review of detailed account balances and journal entry information. Capabilities also include configurable drill-down to additional detail, including financial and non-financial data. Combine your financial reporting with account analysis to achieve more efficient analysis of your key data.

## Security Features

Security can be configured by user to restrict the areas of data that an individual can access. The security, which is controlled by an administrator, is based upon account segment information, and can be set to honor your Oracle security.

## Distribution Manager

Automate the distribution process of your financial statements by using Distribution Manager within Spreadsheet Server. Configure multiple report packages that supply parameters, calculate, and then print or email your reports, all with the click of a button.



Transforming your spreadsheet  
into a dynamic analytical tool

Want to learn more?  
Contact us today.

Fusion5  
Level 8, Majestic Centre  
100 Willis Street  
P.O. Box 10-111, Wellington  
New Zealand

Phone: 64.4.473.4552  
Fax: 64.4.473.4556  
Email: rebecca.tohill@Fusion5.co.nz  
Web: www.fusion5.co.nz



A Product By Global Software, Inc.

Trademark Acknowledgements: Microsoft and EXCEL are registered trademarks of Microsoft Corporation in the United States and/or other countries. Oracle is a registered trademark of Oracle Corporation in the United States and other countries. Global Software, Inc. is not associated or affiliated in any manner with the respective owners of the foregoing trademarks, trade names or service marks unless expressly stated otherwise. The respective owners of the foregoing trademarks, trade names or service marks have not endorsed, certified or approved any of Global Software, Inc.'s products for use in connection with their respective products.